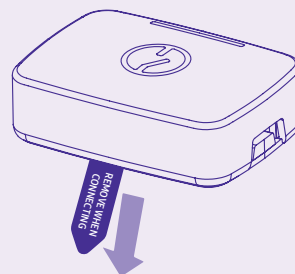
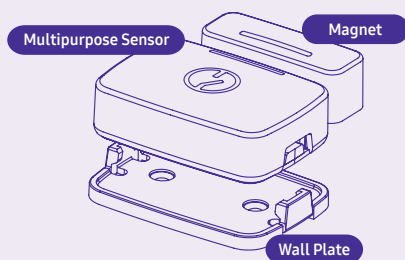


Welcome to your Multipurpose Sensor



Setup

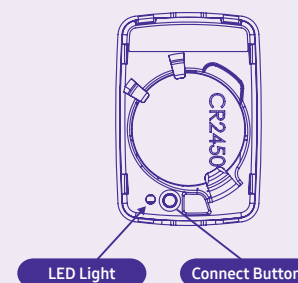
1. Make sure the Multipurpose Sensor is within 15 feet (4.5 meters) of your SmartThings Hub (or compatible device with SmartThings Hub functionality) during setup.
2. Use the SmartThings app on your smartphone to select the "My Home" tab and then select "Add a Thing".
3. Remove the tab on the Multipurpose Sensor marked "Remove When Connecting" and follow the on-screen instructions in the SmartThings app to complete setup.



Troubleshooting

1. Remove the cover of the Multipurpose Sensor, hold the "Connect" button for 5 seconds, and release it when the LED starts blinking red.
2. Use the SmartThings app on your smartphone to select "Add a Thing" and then follow the on-screen instructions to complete setup.

If you're still having trouble connecting the Multipurpose Sensor, please visit [Support.SmartThings.com](https://support.smartthings.com) for assistance.

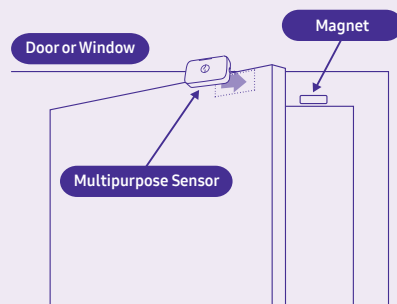


Using your Multipurpose Sensor

Placement

The Multipurpose Sensor can monitor whether doors, windows, and cabinets are open or closed.

Simply place the two parts of the sensor as shown in the illustration, making sure that the magnet alignment marks are next to each other.



Suggestions

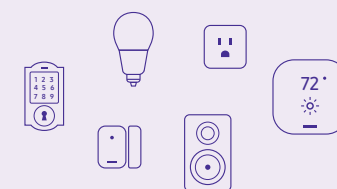
There are many ways that you can use a Multipurpose Sensor to add smartness to your home:

- Use one on your garage door and set it to send you a message if it's left open for too long.
- Use one on your back door and set it to activate a connected lock when it's been closed for a few minutes.
- Use one on your front door and set it to turn on connected lights when you arrive home in the evening.
- Use one on your doors or windows and set it to send you a message if they're left open at night.
- Use one to measure temperature and set it to turn on a fan connected to a SmartThings Outlet when the room gets too hot.

Visit [SmartThings.com/Welcome](https://www.smartthings.com/welcome) for more ideas, tips, and special offers.

Works with SmartThings

SmartThings works with a wide range of connected devices, including lights, cameras, locks, thermostats, sensors, and more.



Look for the **Works with SmartThings** label next time you're buying a connected device for your home, or visit [SmartThings.com](https://www.smartthings.com) to see the full list of compatible devices.



Revised 03/17. Copyright 2017 SmartThings, Inc. All rights reserved.